

BASIN, DAVID & TILTON PONDS ASSOCIATION

WWW.BDTPA.ORG

NEWSLETTER | SPRING 2023

ANNUAL MEETING

The BDTPA annual meeting is scheduled for Saturday August 5th at 10:00 A.M. at Fayette Central School. Before approving minutes from last year's meeting, read the pending draft at: <http://bdtpa.org/meetings.html>

MESSAGE FROM THE PRESIDENT

I hope the budding spring is treating you well and the pending summer is all you hope it to be. Life on a pond in Maine is a special thing, one I hope we are all grateful for. Like many of the recent years, a lot is happening on Basin, David, and Tilton Ponds, all of it exciting and rewarding. The articles in this newsletter reflect many of those activities and how we all can be involved in supporting our ponds and a high quality of life for all of us who love them deeply.

Topics such as the water level, water quality, boating etiquette, land use, and wildlife health are important to all of us and what bring us together as members of BDTPA. Building on the good works and stewardship of the previous BDTPA officers and trustees, I would encourage us all to approach these topics and any other challenges we face this year with the same spirit of cooperation and partnership that has served this community so well over the last several years and is the hallmark of healthy communities everywhere.

Mostly, though, I would encourage us all to enjoy what we have here on Basin, David, and Tilton Ponds and to take care of those things with an intentional long-term vision, to preserve this special slice of the world for the enjoyment of all for many years to come.

Thank you. Take care.

Stephen Smith-Erb

BDTPA President

THE BEAVER DECEIVER

Every spring the water level increases on David Pond. This is due to snow melting and the usual increase in rainfall in the spring months. In the spring of 2022, the level of the pond was extremely high. This level was within 1 inch of over topping Deer Lane. This was a potential public safety issue. The wetlands behind my garage were encroaching on my garage. The stream that flows into David Pond near Hemlock Lane was flowing in reverse, out of David Pond and into the wetlands north of Hemlock Lane. All low laying areas around the pond were flooded. Something was wrong.

When checking the outlet of the pond, it was found that beavers had built a dam 80 to 100 feet wide and 12 to 18 inches high. Water was flowing both over and around this dam. The water flow around the dam was eroding areas that were never exposed to water flow. I contacted Joe Fitzpatrick concerning this issue and he arranged a meeting with a hydrologist. I also contacted the game warden to discuss remediation. We began removal of the center section of the beaver dam covering the 12 foot wide rock pile at the stream. Every day, a group of our members would go to the outlet and remove the beaver debris that was put in place each night. This continued daily for over a month. We continued removal throughout the summer as needed. When the level of the pond receded, the beaver slowed down, as did we. The water level ultimately was lowered by 21 inches. This level remained at about the same level from June to September. Those that worked on the beaver dam gained both respect and disdain for these creatures.

Beaver have created a major problem throughout the state of Maine. They have negatively impacted humans in many areas, flooding homes, roads, farmland, and woodlots. They flood low lying areas, not by accident, but by design. The flooding kills larger trees in the flooded area allowing sunlight in and allowing smaller brush to grow that are the beaver's food source. Unfortunately, we may be observing a tree die-off in low lying areas around David Pond due to the excessive water levels we had for a few months. An example of this can be observed at the intersection of Norcross Pond

Road and Chesterville Ridge Road on the north side of the road.

After many discussions with the game warden and Inland Fisheries and Wildlife, I found that there are basically two solutions to beaver problems: lethal and non-lethal. Lethal being trapping or shooting. We have permission to use lethal measures at any time of year. This is a temporary solution until new beaver move in, which they will. Non-lethal can include live trapping and relocation. Over 80 percent do not survive relocation. Another non-lethal option is the beaver deceiver.

Most beaver deceivers are used where the beavers dam a waterway, such as a road culvert (Jackman's Mill Road), or a stream where water levels on both sides should be equal. This is usually accomplished by placing a culvert with the upstream side encircled with six inch fencing so the beaver cannot plug it up. I have used various designs with limited success throughout Fayette. I researched many designs of deceivers and found only one that seemed to fit our needs at the outlet.

The beaver deceiver that was built and put in place in the beginning of August works like many vanity sinks in your home. Most vanity sinks have drain holes near the upper edge of the sink. If you or the kids leave the water on with drain closed it will allow the water to drain out before it overflows, preventing your home from being flooded.



The beaver deceiver is a 20 foot by 12 inch black PVC culvert with a 6 foot by 15 inch piece of culvert attached to it to form a tee. The ends of the tee are blocked completely

with PVC plank and stainless screws. The bottom of the tee, the water side, has nine 4 inch round holes drilled in it to equal the area of the 12 inch culvert. The tee is suspended on a steel rack that is placed approximately 15 feet into the pond in deeper water. The tee portion can be adjusted to different heights. The other end of the culvert is inset into the rock pile. A 5 foot extension was added to reduce the height of the discharge end to reduce erosion. Beavers are attracted to the sound of running water and dam it up. This design removes that attractant. The initial volume of outflow from the downstream end of the culvert was 7.5 gallons per minute. That volume would take 762 days to lower the pond 1 inch. The concept of this device is that as the elevation of the pond increases, the volume of discharge increases through the culvert.



This design may or may not help control the water elevations due to beaver. This spring we need to reevaluate all aspects of this device and modify placement, elevation, and any unforeseen issues that we observe. We need to be proactive this year rather than reactive. The beavers appear to be active again at the outlet site. They have started placing more debris on the rock pile as of April 18, 2023. There are many active lodges on David Pond. While beavers can be fascinating animals to observe, please be aware they are wild animals and do carry diseases such as Giardia, Tularemia, and Rabies. Observe from a distance.

Submitted by John Andrews, 20 Deer Lane, Fayette

ACTIVITIES IN MAINE THIS SUMMER

This area is well-located to pursue activities in the summer from Rangeley to the coast. Here are some updates from last year and a few new suggestions.

Theater

The **Lakewood Theater** in Madison is offering nine plays this year, beginning in May and running into September. The plays include "Catch Me If You Can", "Half Time", and "Hope and Gravity". Dinner before the play is available at the Lakewood Inn Restaurant (reservations recommended).

The **Theater at Monmouth** line-up includes classics, such as "Richard II", an updated "The Iliad", and family friendly productions "Tall Tales Twice Told" and "HMS Pinafore."

The four musicals at the **Maine State Music Theater** in Brunswick this summer are "Titanic", "The Buddy Holly Story", "9 to 5", "Something Rotten". Plays for children include "Rapunzel" and "3 Little Pigs." The concert series this summer offers tributes to Dolly Parton, the Beatles, and Elvis. The theater is on the Bowdoin College campus. The campus contains a Museum of Art and the Peary-MacMillan Arctic Museum. Across the street from the campus is the Joshua L. Chamberlain Museum (although, as of this writing, it is closed temporarily).

Plays at the **Lewiston-Auburn Little Community Theater** this summer include "Picasso a the Lapin Agile", "Matilda, Jr.", and "The Little Mermaid".

Music

I just discovered that **Augusta has a Symphony Orchestra**. The next concert is on May 21 at 3 PM at the South Parish Congregational Church. It is free with donations gratefully accepted. I don't know if they offer any concerts in the summer but you can check their website.

The **Snow Pond Center for the Arts** in Sidney offer several concerts in the summer and have music camps. As of now, the only concert they have listed is Michael Front and Spearhead in July, but I'm sure they will have more. i have been to several there over the years and saw LeAnn Rimes last year. You sit under the stars and listen to the music, and there are also local vendors with snacks and drinks.

Waterville offers **Waterville Rocks**, a "FREE family-friendly concert series" in the summer.

Of course, **Portland** has many concerts in the summer if you want to travel that far.

Restaurants

Sandy and I discovered **Tuck's**, a bar/restaurant in Farmington with a variety of craft beers and good sandwiches. It is on the corner of Main and Broadway.

Also, in Farmington, the **Homestead Restaurant** has changed its menu and decor. They have new choices for breakfast as well as lunch and dinner.

I recommended the **Cloud 9** restaurant in Augusta last year, but as of this writing they are only open for breakfast and brunch on Saturday and Sunday.

Another note is that **Gifford's** is open in Waterville and Farmington, but because of a fire last winter, they are not serving their own ice cream. I think it is still good but Sandy is not happy with the maple walnut!

From the last newsletter, I would still recommend **Opa** in Waterville, **Mosher's Seafood** in Farmington, **Sarah's** in Wiscasset, **Erika's Seafood** in Harpswell, **Muscongus Bay Lobster** in Round Top, and **Flux** in Lisbon Falls.

Other

An interesting site close to David Pond is the **Washburn Norlands Living History Center** in Livermore. It is open Thursday, Friday and Saturday 10-4. I have never been but am planning on a visit this summer. My sister has visited and said that is definitely worth a trip. Here is a short description from their website:

Norlands is a 400 acre estate which includes a stately Victorian country mansion with farmer's cottage, a gothic-style granite library, a Universalist meetinghouse, a one-room schoolhouse, and an expanse of picturesque working farmland. Come spend a day in 19th century Maine!

Coastal Maine Botanical Garden in Boothbay Harbor. There are also several boat rides offered in Boothbay Harbor - one includes a trip to an island for a lobster feed (called a clam bake on the website). On Tripadvisor, the **Cabbage Island Clam Bake** is listed as a "Travelers Choice 2022" with five stars for 500+ reviews. As a child growing up on the coast, those are the boat trips we would take.

Again, from the last newsletter, the drive to the **Height of Land** near Rangeley is always beautiful. Another great ride is to see the water falls in Maine. Go online and enter map of Maine waterfalls, you will be amazed at the number and there is even a waterfall loop map. For example, **Screw Auger Falls** is 23 feet and you can also swim in the resulting swimming holes.

Submitted by Gail Rioux

*If you have questions call 207-512-0414 or
riouxga@gmail.com*

WATER QUALITY

Water quality monitoring is done on David and Basin, biweekly between May and September by the 30 mile team and volunteers.

Basin pond is 33 acres with a mean depth of 42 feet and a maximum depth of 106 feet. David Pond is 302 acres with a mean depth of 15 feet and a maximum depth of 37 feet.

The shallow depth of David and Tilton Ponds predispose them to increased plant growth due to the littoral zone (where sunlight reaches the bottom), reaching far into the ponds.

The 2022 water quality report is done by Whitney Baker of 30 Mile River Watershed Association and will hopefully be available this spring. More information will be presented at the annual meeting. Stay tuned.

LakeSmart

The LakeSmart team did two evaluations on Rocky Lane last season. Both properties were nicely LakeSmart. We were invited to a wonderful gathering and were pleased to meet more of our neighbors. Such fun.

Please contact the team for a LakeSmart evaluation. It is purely educational, nonregulatory, and free of charge. Do keep us busy as keeping runoff from entering the water is for the benefit of our ponds.

Email debbiecayer@gmail.com

Do it today!

Submitted by Deb Cayer



FOR THE LOVE OF LOONS!

40th Annual Loon Count – Saturday, July 15th will mark the 40th Loon Count for Audubon. If interested in volunteering, contact conserve@maineaudubon.org.

Nesting - Females usually lay two eggs between mid-May and mid- June. Both parents incubate the eggs for about 29 days. Please tell your families and guests to stay off the “loon islands” and to not approach too closely until mid-July.

Loon Calls

(from Cornell.edu)

We hear the loon calls and stop for a moment. Are they meeting up? Have they seen an eagle or hawk?

There are four types of loon calls:

1. A wail to locate each other
2. An aggressive yodel by the male to protect its territory
3. A tremolo that's a fast, wavering call because they're excited, alarmed or in flight
4. A hoot that is short and soft for short range communication.

Things you can do to be loon-friendly

(from Maine Audubon)

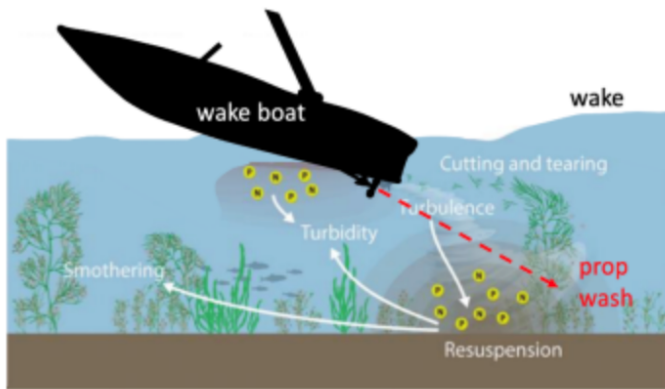
- Obey the no-wake law within 200 feet of shore, and beyond headway buoys.
- Enjoy the “loon islands” **from a distance** until AFTER chicks are hatched, typically after mid-July. Please do NOT climb on the islands during nesting season.
- Keep garbage out of reach of loon egg predators, like skunks and raccoons.
- Use lead-free tackle. Lead that enters our lakes as lost or discarded fishing gear is a leading cause of death for adult Common Loons. To protect loons and other wildlife, Maine state law bans the use and sale of lead sinkers and bare (unpainted) lead jigs that weigh one ounce or less, or that measure 2 ½ inches or less.

Submitted by Ellen Smith-Erb

MAINE LEGISLATIVE UPDATES

LD 693 is an Act to Protect Inland Water Quality, Shorelines, Wildlife and Public Safety by Prohibiting Operation of a Wake Boat to Create an Enhanced Wake Close to Shore or in Shallow Water. This legislation was passed by the Maine legislature and signed into law. This bill prohibits creating an enhanced wake with a boat that is equipped with wake-enhancing equipment within 500 feet of the shoreline or in waters less than 20 feet deep.

This bill was proposed by the Maine Boating Impacts Coalition, a group of organizations and individuals concerned about the damage and danger they have seen from large wakes, who want a solution that will allow safe boating, including wake boating, on Maine's waters.



This policy solution will:

- Reduce wake-caused erosion of fragile lake shorelines
- Keep lake water clean by reducing sediment disturbance in shallow water and close to shore
- Protect lakeside and shallow habitat for nesting loons, fish and other species
- Ensure safe waters close to shore for families, swimmers, and other boaters
- Reduce damage to personal property like docks and moored boats
- Keep wake boat activities in deeper water where they perform the best

For all other boats that are not wake boats, It is unlawful to exceed headway speed within 200 feet of shore, or beyond the buoys marked "headway speed". The operator must consider the effect of the wash or wave created by their watercraft to waterfront piers, floats or other property or shorelines. See a no-wake map of David Pond at <http://bdtpa.org/water-quality.html>

LD 92, An Act to Minimize the Propagation of Invasive Aquatic Plants, was passed by the Maine legislature and signed into law. This bill requires a person when removing a vessel from an inland water body to drain the vessel and other equipment and to remove or open drain plugs, bailers, valves and other devices to drain the water before that vessel is transported. It exempts emergency response vessels from these requirements.

LD 164, An Act to Fund the Lake Restoration and Protection Fund, was passed by the Maine legislature and signed into law. This bill provides ongoing allocations of \$9,000,000 to the Department of Environmental Protection, Lake Restoration and Protection Fund to help fund costs related to projects that improve or maintain the quality of lake waters.

Submitted by Richard Hicks

TOWN OF FAYETTE REMINDERS

5/16 7:00pm Board of Selectman Meeting followed by committee report on the town-owned parcel on David Pond

6/8 Deadline for absentee voting requests

6/13 8:00am-8:00pm Local Referendum Election at Fayette Central School

6/15 6:00pm Annual Town Meeting at Fayette Central School

7/9 9:00am-12:00pm Household Hazardous Waste Day at Readfield Transfer Station (Call Fayette Town Office to reserve a spot)

Every other Tuesday 6:00pm Board of Selectmen meets at Fayette Central School

Every 1st Tuesday of the month 6:30pm School & Home Association meets at Fayette Central School

Every 2nd Tuesday of the month 6:30pm School Board Committee meets at Fayette Central School

Every 3rd Monday of the month 6:30pm Planning Board meets at Fayette Central School

Town Office phone number 207-685-4373

Fayette Central School phone number 207-685-4770

RABIES REPORTED IN FAYETTE

A case of rabies has been reported in Fayette. Please call the Town Office (207-685-4373) if you have any questions, and be aware of your surroundings outside.

DISPOSITION OF LARGE PARCEL ON DAVID POND UNDER CONSIDERATION

The town of Fayette has come into possession of a large parcel of waterfront property on the northwest corner of David Pond. The parcel is accessed via the East Road. The 130 acre parcel includes 1,100 feet of pristine shoreline. (See map below)

An ad hoc committee has been meeting to prepare recommendations for the disposition of this parcel. Several members attended the open meeting in March. The Fayette Voters Facebook page hosted some lively discussion of this topic as well. Many people expressed interest in a town beach. While the Land Use Committee acknowledges that putting sand in our water would be illegal, interest in recreational development with water access remains high. Parker Shores and Basin Pond were offered as examples of public “swimming holes”.

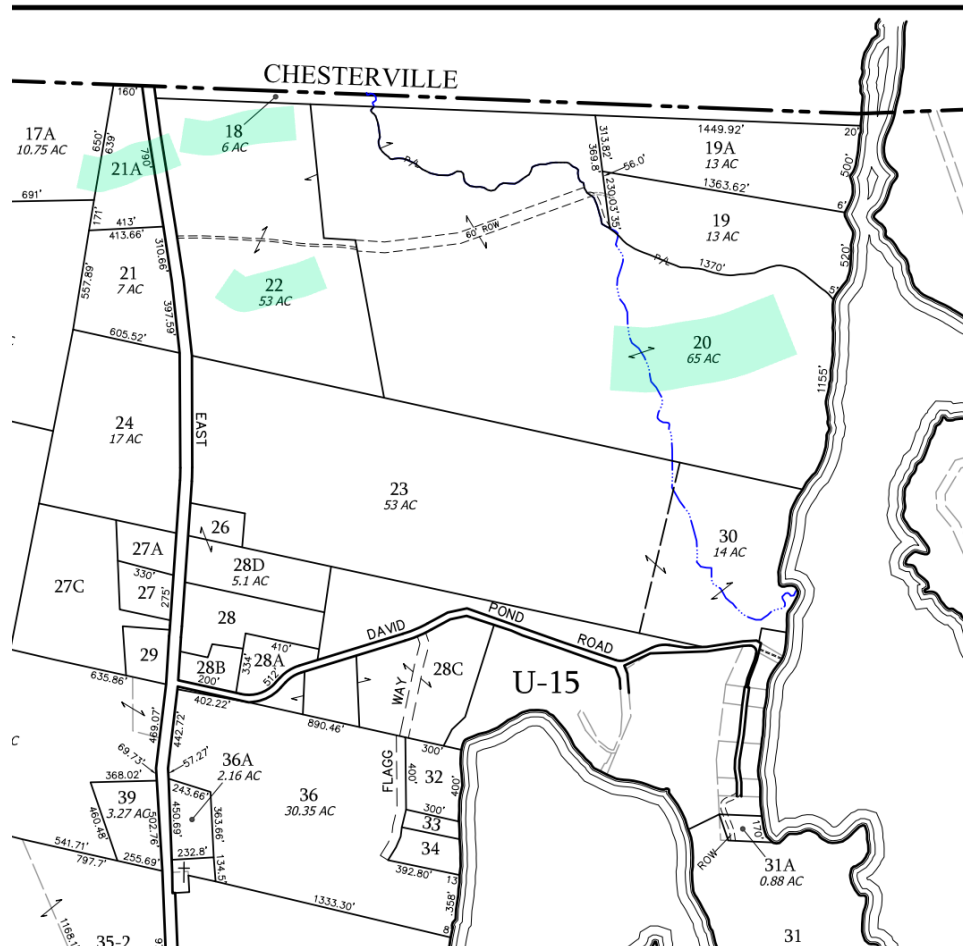
Another suggestion involved parking for the Chesterville Ridge snowmobile trail. Others have proposed a conservation area managed by the KLT. Still others would prefer that we simply sell the land and reduce taxes.

None of the land is suitable for a fire truck refilling station which the area needs.

The board is working to draft a position statement for BDTPA which expresses our concern for the vulnerable ecosystem. Individuals can communicate their suggestions and concerns to the committee by writing to the town.

There will be an open forum wherein the committee will present its recommendations and take comments following the selectman meeting on May 16th. Voting on the proposal will be included on the agenda of the town meeting in June. If you are a permanent resident and registered voter in Fayette, please attend both meetings. Information on public meetings and zoom access is on the Fayette website: <http://www.fayettemaine.org>

Submitted by Liz Hicks



DAVID POND WATER LEVEL

BDTPA has been tracking the water level on David Pond since 2017. The graph below shows the seasonal variations over time. See more information on our association website bdtpa.org.

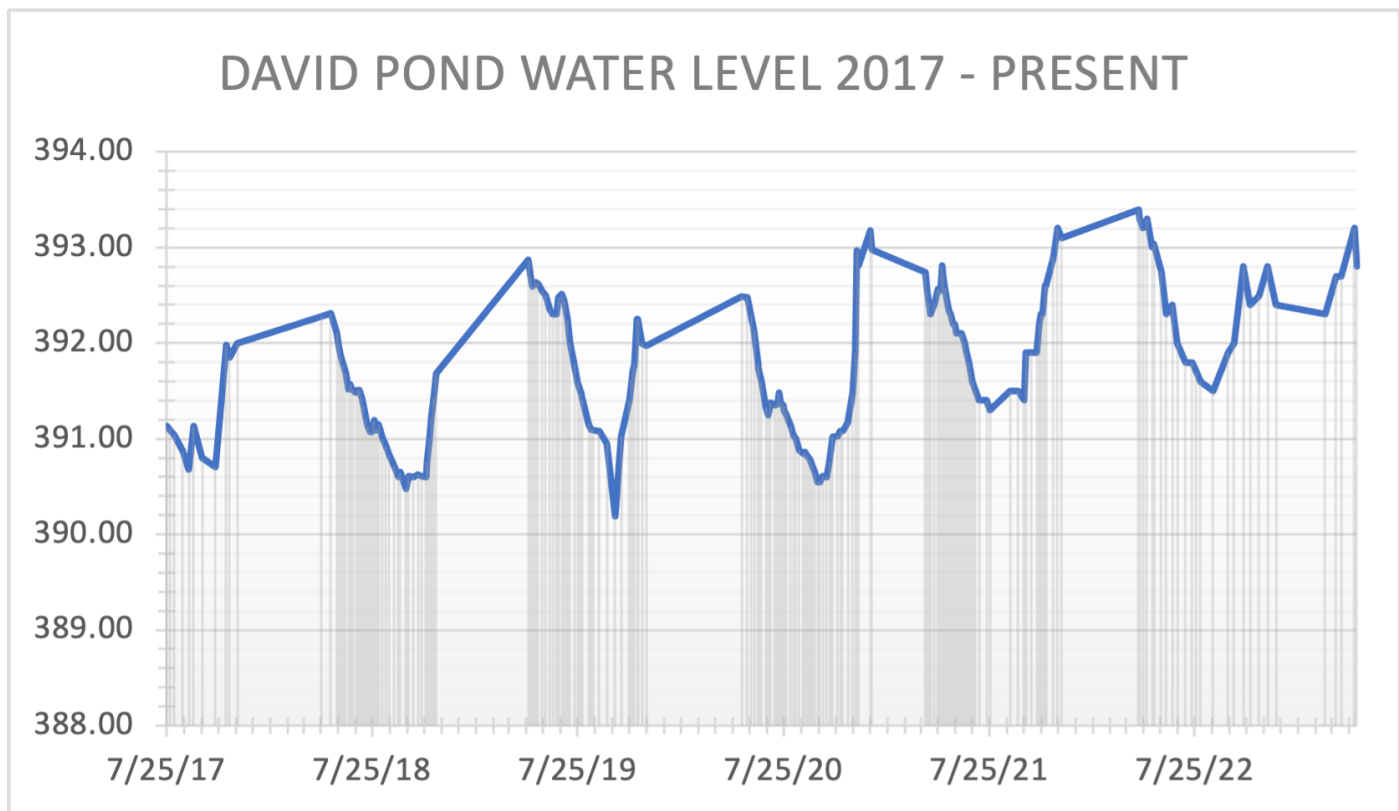


Figure 1: Updated 5/8/2023 - for more recent data see www.BDTPA.org/water-level

BDTPA CONTACTS

President
Steve Smith-Erb
president@bdtpa.org

Vice President
Steve Melchiskey
vp@bdtpa.org

Treasurer
Gail Rioux
treasurer@bdtpa.org

Secretary
Ellen Smith-Erb
secretary@bdtpa.org

Trustee 1
John Andrews
trustee1@bdtpa.org

Trustee 2
Chris Riley
trustee2@bdtpa.org

Trustee 3
Susan French Smith
trustee3@bdtpa.org

Water Quality Officer
Deb Cayer
water-quality@bdtpa.org

30 Mile River Liaison
Kirstie Ludwig
30-mile@bdtpa.org

Plant Patrol Coordinator
Steve Smith-Erb
plant-patrol@bdtpa.org

BDTPA Webmaster
Newsletter Editor
Richard Hicks
webmaster@bdtpa.org

Join BDTPA at bdtpa.org/join-bdtpa

Gail Rioux,
BDTPA Treasurer
244 Shore Rd
Fayette 04349

